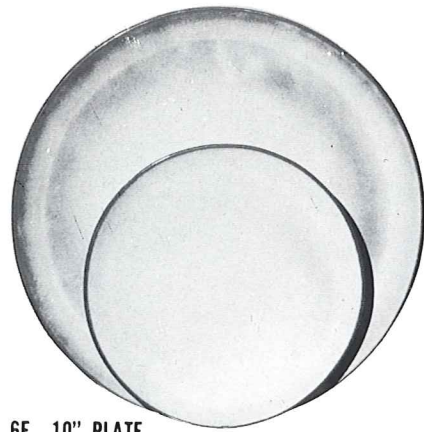




4K—BUTTER DISH



6F—10" PLATE

6G—7" PLATE



* 6B—SUGAR WITH LID

* 6AB—CREAM & SUGAR SET



* 6A—9 OZ. CREAMER



* 6U—18 OZ. BAKER FOR TWO
A COVERED CANDY DISH



** 6C—CUP

6E—5" WELLED SAUCER



* 6H—SALT & PEPPER



* 6VS—1½ QT. BAKER
* 6VS/W BAKER & WARMER SET



* 5LC—6 OZ. JUICE



* 5L—12 OZ.
TUMBLER



* 81—1 QT. PITCHER



* 249 TACO HOLDER
BOXED 2 PER BOX
Not Available in Flame



* 6V—2½ QT. BAKER
* 6V/W BAKER & WARMER SET



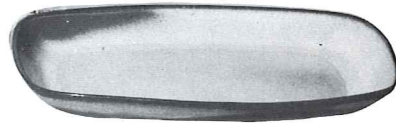
* 6T—6 CUP TEAPOT



* 80—2 QT. PITCHER



* 6J—2 CUP TEAPOT

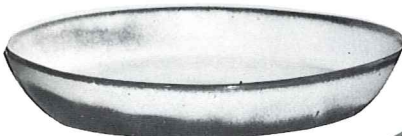


* 5QS—13" STEAK PLATE (SHALLOW PLATTER)

* 6P—11" STEAK PLATE

* 5PS—9" TRAY

Not Available in Flame.



* 91—10" BAKING DISH



* X0—3 OZ.
SINGLE SERVING
BOWL



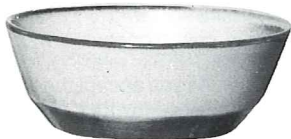
* 6S—2 SPOUT GRAVY



* 242 CORN DISH
Solid Colors only-No T.C.



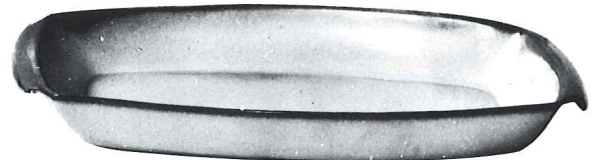
* 243—6½" CRESCENT SALAD



* 6N—1 QT. BOWL

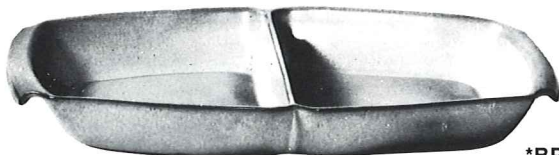


* 6X—14 OZ. CHILI SOUP
* 6XS—10 OZ. FRUIT



* 5P—17" DEEP PLATTER

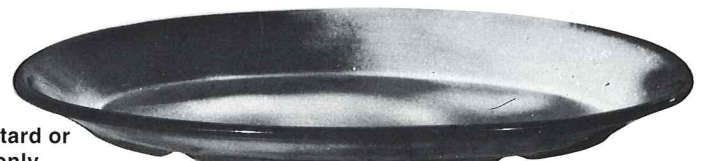
* 5Q—13" DEEP PLATTER



* 5QD—13" DIVIDED BOWL



*BP-6 oz. Bean Pot, Custard or
chip-dip- Solid colors only
NO Terra Cotta



* TP—17" OVAL PLATTER

This page available in colors shown on opposite page—except where noted—

* Available in FRANKOMA COLORS! Add 50% for Flame, for Flame

** Cups will be sent in solid color unless specified TC.